



SMOBIO[®]

Small Bio, Smart Tool

www.smobio.com

Product Information

ExcelBand™ series

Enhanced 3-color Regular Range Protein Marker (9-180 kDa)

PM2510

Size: 250 μ l \times 2 (for 100 applications)

PM2511

Size: 250 μ l \times 10 (for 500 applications)

Storage

4°C for 3 months

-20°C for long term storage

Loading Volume

- **3 μ l** or **5 μ l** per loading for clear visualization during electrophoresis on a 15-well or 10-well mini-gel.
- **1.5~2.5 μ l** per well for general Western blotting transfer.
- Apply more for a thicker (> 1.5 mm) or larger gel.

Description

The PM2510/PM2511 ExcelBand™ Enhanced 3-color Regular Range Protein Marker is a ready to use three-color protein standard with 10 pre-stained proteins covering a wide range of molecular weights from 10 to 180 kDa (9 to 170 kDa in Bis-Tris (MOPS) buffer and 10 to 170 kDa in Bis-Tris (MES) buffer). Proteins are covalently coupled with a blue chromophore except for two reference **green** and **red** bands (25 kDa and 75 kDa, respectively) when separated on SDS-PAGE (Tris-Glycine buffer).

The PM2510/PM2511 ExcelBand™ Enhanced 3-color Regular Range Protein Marker is designed for monitoring protein separation during SDS-polyacrylamide gel electrophoresis, verification of Western transfer efficiency on membranes (nitrocellulose, PVDF, or nylon) and for approximating the size of proteins.


The marker is supplied in gel loading buffer and is ready to use. **Do NOT heat, dilute, or add reducing agents before loading.**

Contents

Approximately 0.2~0.6 mg/ml of each protein in the buffer (20 mM Tris-phosphate (pH 7.5), 2% SDS, 3.6 M Urea, and 15% (v/v) Glycerol).

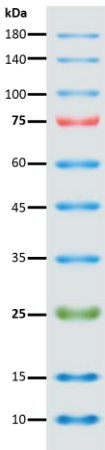
Guide for Molecular Weight Estimation

Migration patterns and approximate MWs (kDa) of PM2510/PM2511 ExcelBand™ Enhanced 3-color Regular Range Protein Marker in different electrophoresis conditions are listed below:

Band	Color	TRIS-GLYCINE	BIS-TRIS (MOPS)	BIS-TRIS (MES)	
1	Blue	180	170	170	
2	Blue	140	130	130	
3	Blue	100	93	93	
4	Red	75	70	72	
5	Blue	60	53	53	
6	Blue	45	41	42	
7	Blue	35	30	30	
8	Green	25	22	23	
9	Blue	15	14	14	
10	Blue	10	9	10	



ExcelBand™
Enhanced 3-color Regular Range Protein Marker
PM2510



Note. The apparent molecular weight (kDa) of each protein has been determined by calibration against an unstained protein standard; supplemental data should be considered for more accurate adjustments in different electrophoresis conditions.

Migration Patterns of PM2510 Prestained Protein Marker



Quality Control

Under suggested conditions, PM2510/PM2511 ExcelBand™ Enhanced 3-color Regular Range Protein Marker resolves 10 major bands in SDS-PAGE (Tris-Glycine, MOPS, and MES buffer) and after Western blotting transfer to a nitrocellulose membrane.

Other information

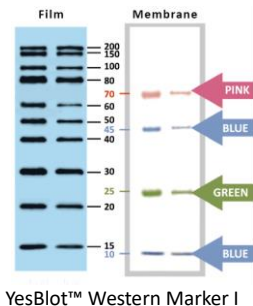
SMOBIO Technology, Inc. claims all warranties with respect to this document, expressed or implied, including but not limited to those of merchantability or fitness for a particular purpose. In no event shall SMOBIO Technology, Inc. be liable, whether in contract, tort, warranty, or under any statute or any other basis for special, incidental, indirect, punitive, multiple or consequential damages in connection with or arising from this document, including but not limited to the use thereof.

Caution: Not intended for human or animal diagnostic or therapeutic uses.

Related Products

PM1500	ExcelBand All Blue Regular Range Protein Marker, 250 μ l \times 2
PM1600	ExcelBand All Blue Regular Range Plus Protein Marker, 250 μ l \times 2
PM1700	ExcelBand All Blue Broad Range Protein Marker, 250 μ l \times 2
PM2500	ExcelBand 3-color Regular Range Protein Marker, 250 μ l \times 2
PM2600	ExcelBand 3-color High Range Protein Marker, 250 μ l \times 2
PM2700	ExcelBand 3-color Broad Range Protein Marker, 250 μ l \times 2
PM2800	ExcelBand 3-color Extra Range Protein Marker, 250 μ l \times 2
PM5000	ExcelBand 3-color Pre-stained Protein Ladder, Regular Range, 250 μ l \times 2
PM5100	ExcelBand 3-color Pre-stained Protein Ladder, High Range, 250 μ l \times 2
PM5200	ExcelBand 3-color Pre-stained Protein Ladder, Broad Range, 250 μ l \times 2
PS1000	FluoroStain Protein Fluorescent Staining Dye (Red, 1,000X), 1 ml
DM1100	ExcelBand 50 bp DNA Ladder, 500 μ l
DM2200	AccuBand 100 bp DNA Ladder II, 500 μ l

- DM3100 ExcelBand 1 KB (0.25-10 kb) DNA Ladder, 500 µl
- DM5100 ExcelBand Super Range DNA Ladder, (50 bp- 25 kb), 500 µl
- VE0100 B-BOX™ Blue Light LED epi-illuminator, AC 100-240V, 50/60Hz
- WM1000 YesBlot Western Marker I, 250 µl



The latest version of the manual can be downloaded from www.smobio.com/shop.

For research use only
2023 ver. 3.3.1